

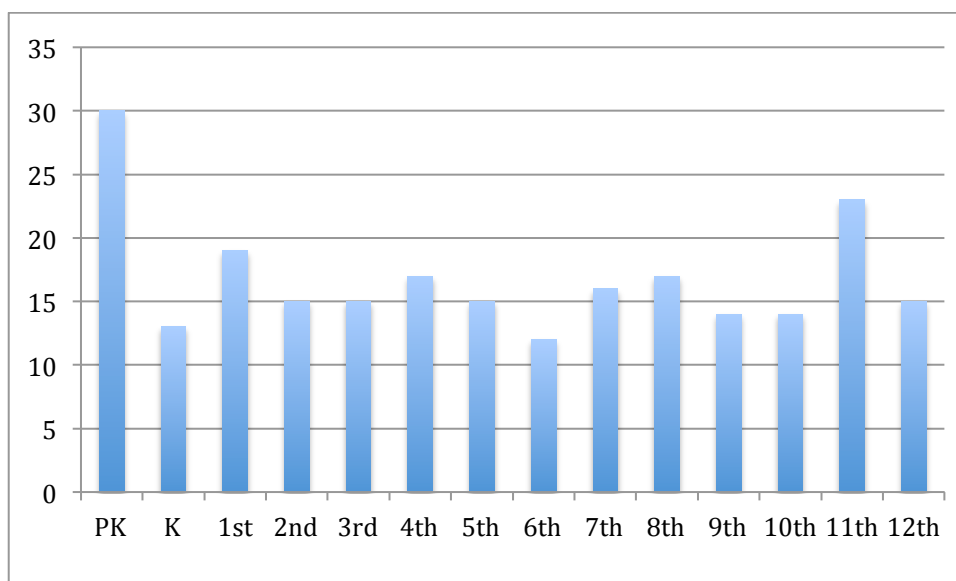


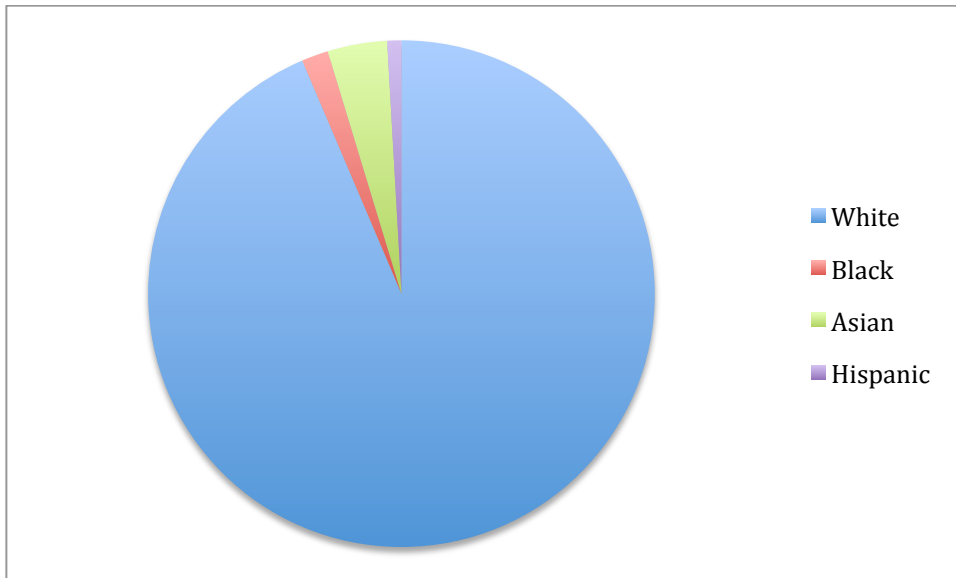
Tallulah Academy Academic Profile 2015 -2016

School and Community:

Located in rural northeast Louisiana, Tallulah is an agriculturally based community with a population of approximately 7,200. Tallulah Academy is an independent college preparatory school educating students pre-kindergarten through grade twelve which admits students from all ethnic, cultural, racial, and religious backgrounds. Tallulah Academy was established to offer students a safe, nurturing, challenging environment in which to realize their highest academic potential, discover and develop their unique talents and abilities, and fully appreciate and demonstrate the sound values and high moral standards that will enable them to make real and lasting contributions as productive citizens.

Tallulah Academy has an enrollment of 235 students distributed as follows:





Accreditation:

Tallulah Academy/Delta Christian School is Brumfield-Dodd approved and fully accredited by the Southern Association of Colleges and Schools (SACS), the Mississippi Association of Independent Schools, and the Louisiana State Department of Education.

School Calendar:

The school operates on a two-semester system, 178 days divided by two terms. Students sit for comprehensive exams at the end of each semester. The school day is divided into seven 53-minute class periods that meet daily.

Curriculum:

Tallulah Academy offers a traditional, college preparatory curriculum that emphasizes core courses in English, math, science, and social studies. Dual enrollment opportunities in English, math, history, and Spanish are available to juniors and seniors.

TA issues a Louisiana state diploma for completion of one of the following diploma paths:

Basic Core Diploma = 24 credits

Minimum Requirements for Graduation

English - 4 units: English I, English II, English III, English IV

Math - 4 units: Algebra I, Geometry, and Algebra II, Financial Math, or Advanced Math.

Science - 3 units: Biology, Physical Science, and 1 units from Chemistry, Biology II, or Environmental Science.

Social Studies - 3 units: U.S. History, Civics, and World Geography or World History.

Health and P.E. - 2 units

Electives - 8 units

Core 4 Diploma = 24 credits Required for Admission to 4-year Universities.

English - 4 units: English I, English II, English III, English IV

Math - 4 units: Algebra I, Geometry, Algebra II, Financial Math or Advanced Math

Science - 4 units: Biology, Chemistry and 2 units from Physical Science, Biology II, and Environmental Science.

Social Studies: 4 units: Civics, U.S. History, 1 units of World History or World Geography and 1 units from World History, World Geography, Sociology, Psychology.

Health and P.E. - 2 units

Foreign Language: - 2 units in the same foreign language.

Arts: - 1 unit - Fine Arts Survey

Electives- 3 units

Grading Scale:

100.00 – 93.50 A = 4

93.49 – 86.50 B = 3

86.49 – 76.50 C = 2

76.49 – 68.50 D = 1

68.49 – 0.00 F = 0

GRADING SCALE FOR HIGH SCHOOL DUAL ENROLLMENT CLASSES:

All dual-enrollment and AP courses will be graded on a 5 point scale:

A=5

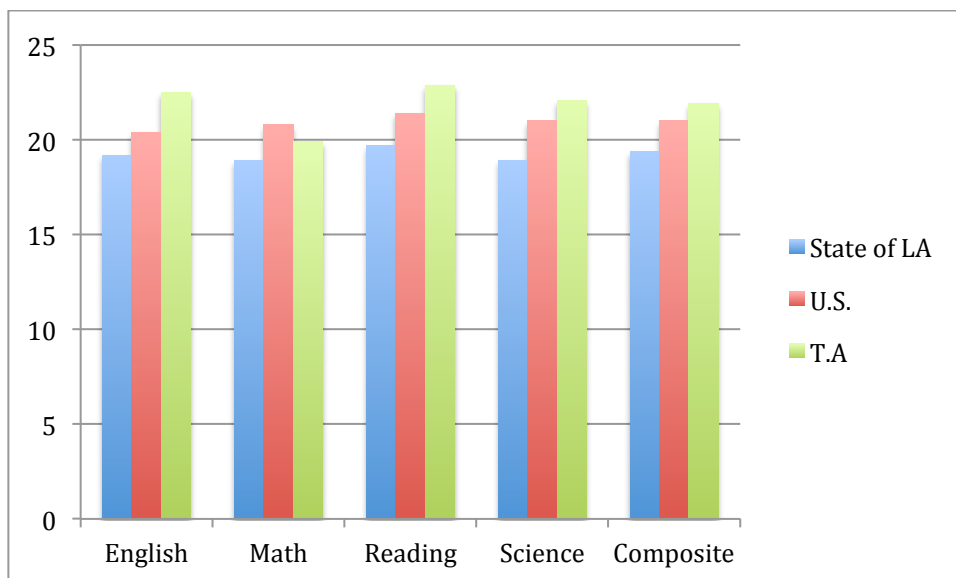
B=4

C=3

D=2

F=0

ACT Averages for TA Class of 2015



Approximately 85 % of graduating seniors go on to attend a 2-year or 3-year college or university. Tallulah Academy graduates have been accepted to the following colleges and universities:

Belhaven College

Delta State University

Louisiana College

Louisiana State University

Louisiana Tech

Loyola- New Orleans

Millsaps College

Mississippi College

Mississippi State University

Northwestern State University

Rice University

Tulane University

University of Alabama

University of Arkansas

University of Louisiana – Lafayette

University of Louisiana – Monroe

University of Mississippi

University of Southern Mississippi